

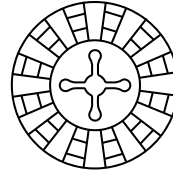
DID YOU KNOW?

Group and conventions fact sheet



Located in Bethlehem in the Free State, next to the new Dihlabeng Mall,

Frontier Inn and Casino is a charming, boutique casino resort perfectly situated en-route to Clarens. Comfortable accommodation, lively entertainment, and service with a smile, characterise this frontier-themed establishment with its magnificent finishes.



Broad Based BEE Rating

BEE rating level 1
BEE procurement 135%

Refer to www.peermont.com for detailed information

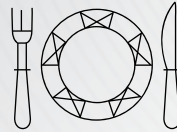


Accommodation

The Peermont Metcourt is a cosy 3-star select services hotel that offers comfortable, affordable accommodation and delightful service.

Hotel Features:

- Lounge
- Restaurant
- Secure parking
- Wireless internet access in the hotel lobby



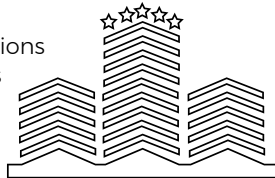
Hotel layout

- Total Rooms: 21
- 8 Classic Rooms (Twin Beds)
- 12 Superior Rooms (1 King Bed)
- 1 Special Assistance Room (Twin Beds)
- Smoking and Non-smoking rooms are available.
- Check in after 15h00. Check-out before 11h00.



Rooms Feature:

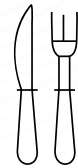
- Air-conditioning
- Bathroom:
Bath and shower in all superior rooms
Shower only in the classic rooms
- Fast Food delivery service from 10h00 to 02h00
- Hair dryer
- International direct dial telephone
- Television featuring:
Local television and radio stations
Selected satellite TV channels
- Cable internet access
- Tea and coffee station
- Writing desk



Beef Baron

Offers mouth-watering breakfasts, lunches and dinners. Over and above the traditional à la carte menu including steaks, burgers and a wide variety of salads, it also offers a daily buffet during lunch and dinner over peak periods.

- Hours: 07h00 to late
- Dress: Casual
- Capacity: 186
- Smoking & non-smoking area.
- Indoor and outdoor seating.



Munchies

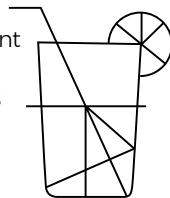
Whatever your taste, if it's a meal on the go, at Munchies you will leave satisfied with the range of choices.

Hours: 08h00 to 02h00

Coachman's Saloon

The Coachman's Saloon provides entertainment ranging from themed evenings, sporting events, ladies nights, music events, functions and many more. Guests can order a relaxing drink or cocktail and any of the mouth-watering dishes on the basket style menu.

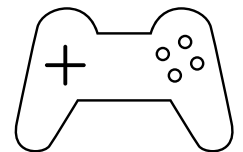
Hours: 12h00 to close | Dress: Smart Casual



LITTLE RASCALS CHILDCARE

This childcare facility caters for all children between the ages of 2 to 12 years. At Little Rascals, children can enjoy a carefree, safe and secure environment, whilst being cared for by trained personnel.

Hours: Monday to Friday 14h00 to 22h00
Saturday 10h00 to 00h00
Sunday 10h00 to 20h00
Public Holiday 14h00 to 20h00
School Holiday 14h00 to 22h00



MAGIC COMPANY

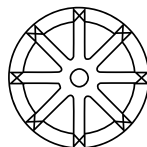
The Magic Company offers a variety of video games to entertain the children. A total of 25 games are available, catering for all ages.

Hours: Monday to Friday 14h00 to 22h00
Saturday 10h00 to 24h00
Sunday 10h00 to 20h00
Public & School Holidays 10h00 to 22h00

Conference and Events Facilities

The Coachman's Saloon and Meeting Post conference venue can cater for small conferences and private functions for up to 80 delegates.

Frontier Inn and Casino also has a grass embankment that can cater for groups up to 200 people with a marquee tent (Equipment must to be hired externally).



Casino

The exciting Frontier Casino continuously offers exciting promotional activities for all players and features smoking and non-smoking areas as well as a Salon Privé for the discerning player.

Slots

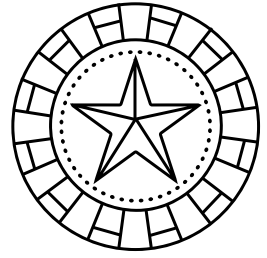
The Frontier Casino offers a variety of ultra modern slot machines in various denominations. Boasting a variety of 140 machines, in the casino area. Slots are open 24 hours, 7 days a week.

Tables

Frontier offers 9 exciting tables featuring blackjack and roulette games. Hours: 12h00 to close

Salon Privé

The exclusive Salon Privé ensures the ultimate gaming experience for the high-roller.



Special Events

Bethlehem Air Show

The annual Bethlehem Airshow has become one of the major airshows in South Africa. For those who like to browse, there is a vast selection of flea market stands. There is also sufficient food and beverage stands as well as a beer garden.



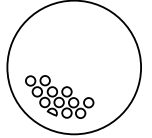
Ficksburg Cherry Festival

Every year, the Ficksburg Cherry festival activities include cherry tours, a golf classic, a half marathon, cherry product competitions, veteran vehicle displays, equestrian events and beer fests. This annual event takes place during the third week in November.

Golf Enthusiasts

The Clarens Golf And Trout Estate

At the Clarens Golf and Trout Estate, a round begins at the stylish clubhouse for both nines, which is at the highest point of the Estate. Before you tee off, take time to absorb the setting of the picturesque town and the full 360 degree view of the mountains. All of the 18 holes meander along and across the tranquil river and its splendid series of trout dams, waterfalls and cascades.



Adventure Addicts

On the outskirts of Bethlehem lay various retreats offering many forms of tourist activities such as 4x4 trails, white river rafting, quad biking, mountaineering, fishing, game drives and hiking.

General

Accounts

Accounts are payable by cash or credit card on presentation. Cheques are not accepted.

Animals

We regret that we do not allow animals at Frontier Inn and Casino.

ATMs

An Automated Teller Machine is situated at the main entrance to the casino floor and powered by Absa.

Banks

All the major banks are located in Bethlehem with regular South African banking hours.

Currency

South African Rand (ZAR).

Government Tax

Value Added Tax (VAT) is applicable.

Language

English, Afrikaans and Sotho (local language).

Weather

The climate is usually warm and sunny in summer, October to March and cold and chilly in winter, April to September. The rainy season is generally from December to March.

Average day temperature:

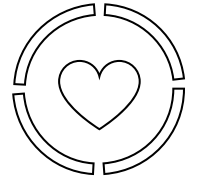
October to March 68°F - 105°F / 20°C - 40°C

April to September 33°F - 68°F / 0°C - 20°C



Caring for the Communities

At Peermont we firmly believe in improving the well-being of communities in which each of our casinos, hotels and resorts operate. This is achieved by the continual provision of financial assistance, skills training and investment support through the various Peermont Trusts and other Corporate Social Investment and Responsibility initiatives focused within three designated pillars - namely education and youth development, entrepreneurial development and community infrastructure.



Historical Sites

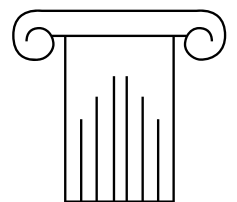
Bethlehem, situated in a fertile valley of the Maluti Mountains on the N5 highway, is the largest commercial, industrial & educational centre in the eastern free state & the northern terminus of the mountain route.

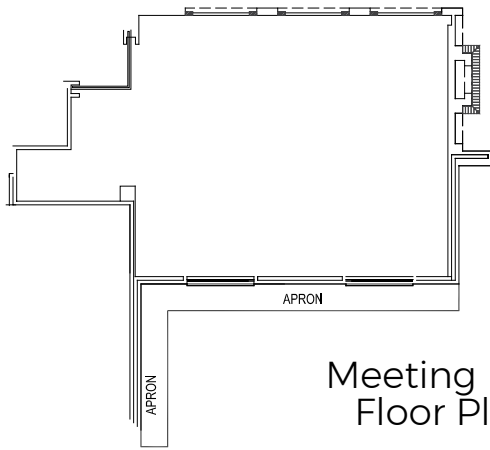
The original settlers found that wheat flourished in the valley & hence the town was named Bethlehem (house of bread).

Bethlehem was founded by the Voortrekkers during the 1840's and is the setting for a number of historical sandstone buildings, many of which are now provincial heritage sites.

Sotho mud huts are arranged around the perimeter. A beautiful dam presents a waterfront with an entertainment venue while friendly and cozy pubs welcome any ravished patron with happy conversation be it over a glass of your favorite brew, or even a meal fit for a king.

An art gallery, museum and numerous heritage houses keep one bound in the wealth of Bethlehem's presentation. Beautiful church buildings tower above the developments and striking up a conversation with any local will welcome your heart even further in the town's rich historical legend.



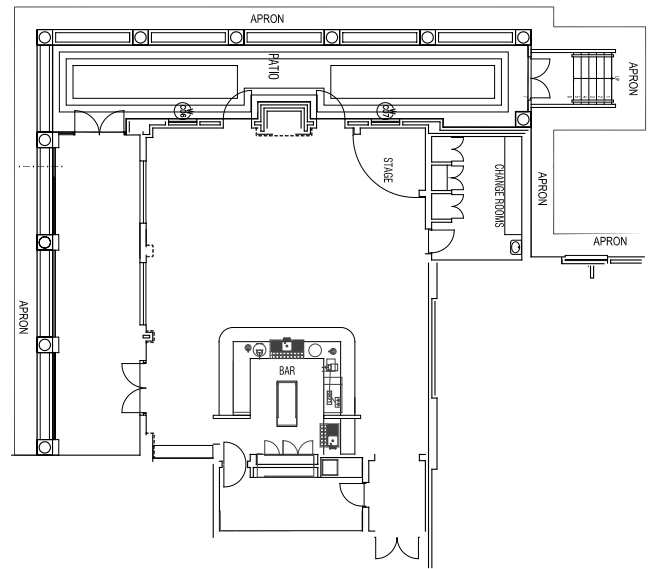


Meeting Post Floor Plan

SEATING AND CAPACITY INFORMATION

	COCKTAIL	BANQUET	CINEMA	SCHOOLROOM	U-SHAPE	BOARDROOM
COACHMAN'S SALOON	80	60	80	50	40	30
THE MEETING POST	80	50	80	45	40	30

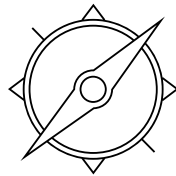
The above seating styles are applicable for wall to wall seating only. They do not include technical equipment or staging.



Coachman's Saloon Floor Plan

LOCATION

Frontier Inn and Casino is conveniently situated in Bethlehem, Free State on the N5. Bethlehem is 2 ½ hours drive from Johannesburg and Bloemfontein and only 35kms from Clarens. It is a convenient half way stop over on your way to Durban.



GPS co-ordinates: S: 28° 14' 28.03" E: 28° 19' 44.72"

Directions From Johannesburg

Take the N3 to Durban. Go through the Wilge tollgate. At Warden, take the R714 towards Bethlehem.

At the T-Junction, turn left (follow the signage to Bethlehem). Once in Bethlehem, continue straight until you pass the Engen Petrol Station on your right. Continue for approx. 200m, the Frontier Inn and Casino will be on your right.

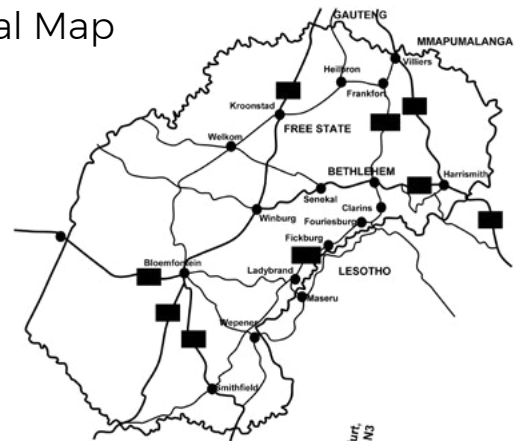
Directions From Bloemfontein

Follow the N5 directly to Bethlehem. Once in Bethlehem, continue straight with Muller street until you get the Metropolitan centre on your left and Mr Price on your right. At the traffic light intersection, turn right into Riemland Road. Continue straight until you pass the Engen Petrol Station on your right. Continue for approx. 200m, the Frontier Inn and Casino will be on your right.

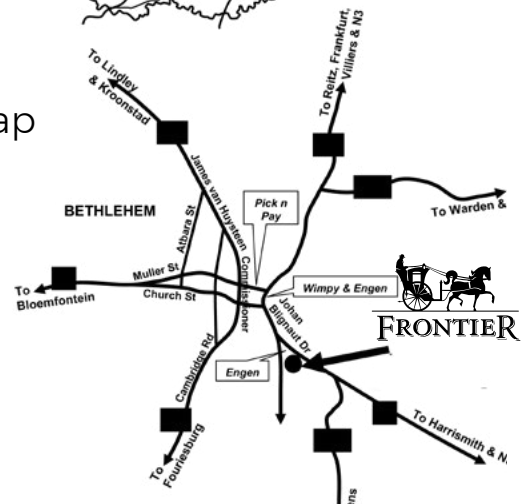
Directions From Durban

Take the N3 towards Johannesburg. At Harrismith, take the N5 towards Bethlehem. As you enter Bethlehem, you will find the Frontier Inn and Casino on your left.

Regional Map



Local Map



ADDRESS
 Johan Blignaut Drive (N5),
 Bethlehem, Free State, South Africa
 PO Box 615, Bethlehem,
 South Africa, 9700
 T +27 (0)58 307 6000
 info@frontierinn.co.za
 www.frontierinn.co.za

PEERMONT GROUP SALES
 T +27 (0)11 928 1903
 sales@peermont.com

PEERMONT CENTRAL RESERVATIONS
 T 0860 777 900 (SA only)
 +27 (0)11 928 1928
 reservations@peermont.com

