

DID YOU KNOW?

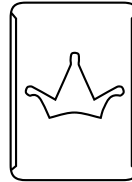
Group and conventions fact sheet



**MMABATHO
PALMS**
HOTEL CASINO CONVENTION RESORT

Mmabatho Palms Hotel Casino Convention Resort

has a long history of casino fun and warm hospitality. Situated in the historic town of Mafikeng, the resort encapsulates a relaxing entertainment oasis where guests can celebrate in style with vibrant casino action, four-star accommodation, outdoor activities and gourmet delights. Mmabatho Palms is the perfect destination for discerning business, leisure and conference guests.



Broad Based BEE Rating

BEE rating level 1
BEE procurement 135%

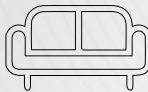
Refer to www.peermont.com for detailed information



Accommodation

This luxury 4-star Peermont Walmont hotel at Mmabatho Palms features décor and furnishings of the highest quality.

Hotel Features:



- Bar and Lounge
- Breakfast Restaurant
- Secure Parking
- 2 Swimming pools

Hotel layout

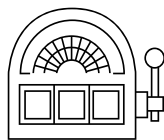


- Total Rooms: 150
- 73 Classic Rooms (2 Twin beds)
- 24 Luxury Rooms (2 Twin beds)
- 28 Family Rooms (1 King bed and 2 single beds)
- 20 Executive Villas (1 King bed)
- 3 Suites (1 King bed)
- 1 Presidential Suite (1 King bed)
- 1 Special Assistance Room
- Smoking and non-smoking rooms are available.
- Check in after 14h00. Check-out before 11h00.

Rooms Feature:



- Air-conditioning
- Bath and shower
- Electronic room safe
- Electric shaver point (110/220V)
- Hair dryer
- International direct dial telephone
- Mini Bar (on request)
- Room service
- Television featuring:
 - South African TV channels
 - Selected Satellite TV channels
- Tea and coffee station
- Writing desk



Slots Bar

This bar is situated in the slots area of the casino.
Hours: 08h00 to close
Dress Casual
Non-smoking area

Casino Bar



This bar, situated in the tables area, has an intimate atmosphere and guests can enjoy a refreshing drink without leaving the comfort of the casino.

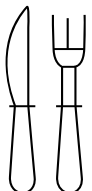
Mon - Fri: from 16h00 | Sat - Sun: from 13h00

Motswedi Terrace Restaurant & Bar

A chic à la carte restaurant with a distinctive African theme featuring a full breakfast and internationally flavoured cuisine. The Motswedi Terrace Bar is located next to the pool, ideal for private functions, like barbeques and themed events. Capacity: 120.

Breakfast
Mon - Fri: 06h30 to 10h30
Sat - Sun: 07h00 to 11h00

Terrace Menu: Dinner: 18h00 to 22h30



Palms Retreat Wellness Spa

The Palms Retreat Wellness Spa is the perfect full beauty centre offering a variety of luxurious treatment options. The wellness spa offers massages, facials, anti-ageing treatments, body treatments for slimming, firming, energising and exfoliating, hand and feet therapy, grooming for both men and women, access to an infrared sauna and a sun bed.

Tues - Fri: 08h00 to 18h00
Sat: 08h00 to 13h00



Kiddies Corner

Guests can leave their children between 4 and 12 years old in the caring and competent hands of our professional staff.
Wed - Fri from 13h00 to 21h00 | Sat from 09h00 to 18h00

Outdoor Children's Play Area

Situated near the back swimming pool.



Moo Bar

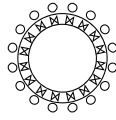
A premium entertainment destination offering the finest beverage selection, trendy facilities, regular specials and events such as live sport screenings, ladies nights, weekend parties and live DJs - for an utterly good time.

Mon - Tues: closed | Wed - Thurs: 17h00 to 02h00
Fri - Sat: 12h00 to 02h00 | Sun: 12h00 - 20h00

Grand Leopard Room

The Grand Leopard Room features a pre-assembly area and can be sub-divided into two rooms, namely the Leopard Room and Mebala Room. The Leopard Room also features a 26,64m² stage.

Mokala Room

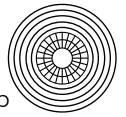


The Mokala Room is located just off the Reception area and is ideal for smaller meetings, workshops and think-tanks.

Bogosing Room

Situated alongside the Legotla Room, the Bogosing Room caters for up to 160 delegates in cinema-style seating.

Boma



The Boma can accommodate up to 120 delegates for private, sit-down outdoor dinner functions. Team-building activities and packages are regular features incorporating the mini-golf facilities and wedding events utilising the soccer field and boma areas are popular choices in Mafikeng.

Casino

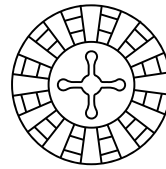
The Mmabatho Palms casino features a smoking and non-smoking playing area.

Slots

Mmabatho Palms offers a variety of modern slot machines in various denominations. Boasting a variety of 155 machines, the casino continuously offers exciting promotional activities for all players. Slots are open 24 hours, 7 days a week.

Tables

Mmabatho Palms offers 9 gaming tables, with roulette, blackjack and poker games on offer.
Hours: 16h00 to close – Monday to Friday
13h00 to close – Saturdays, Sundays and Public Holidays



Swimming Pools

Mmabatho Palms features 2 swimming pools, restricted to hotel residents only.

Tennis

Two floodlit tennis courts located next to the sports field. Hours: 24 hours

General

Accounts

Accounts are payable by cash or credit card on presentation. We regret that we don't accept cheques unless they are bank guaranteed for the full amount, or prior arrangements have been made with the General Manager.

Animals

We regret that we don't allow animals at Mmabatho Palms.

ATMs

Automated Teller Machines are situated near slots entrance.

Banks

All the major banks are located in Mafikeng with normal South African banking hours.

Credit Cards

We accept American Express, Diners Club, Master and Visa cards.

Currency

South African Rand (ZAR).

Government Tax

Value Added Tax is applicable.

Language

English, Afrikaans and Setswana.

Weather

The climate is usually warm and sunny in summer, October to March and cold in winter, April to September. The rainy season is generally from December to March.

Average day temperature:

October to March - 18°C - 35°C

April to September - 6°C - 25°C

Retail

Confectionery Shop



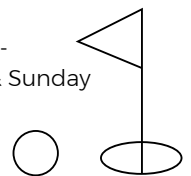
A small confectionery shop is located next to the casino and offers a variety of sweets, biltong, cigarettes and other confectionery items.
Hours: 08h00 to 22h00
- Sunday to Thursday
08h00 to 01h00
- Friday and Saturday

Mini-Golf

An 18-hole mini golf course is situated adjacent to the Mmabatho Palms main entrance.

Hours: 10h00 to 18h00 -
Wednesday, Thursday & Sunday
10h00 - 21h00 - Friday
and Saturday

Bookings: At the
Peermont Walmont Reception



Attractions

Mafikeng is a cultural jewel. It has much to offer the visitor both in terms of fascinating history and hospitality.

Bethel's Rocks, Cecil John Rhodes Monument and Commissioner Place, Kgotla of the Barolong Boora, Tshidi Maratiwa House, Mafikeng Museum and Siege Headquarters, Mafikeng Town Beacon and Maphatswa Cemetery, Maratiwa House, Mmabana Cultural Centre

The Monument to Boer ambush of British (Koedoesrant) and the Monument of Democracy and Peace, the South African War Monument, Spencer Minchin's House, the Mafikeng Cemetery and Prison, The Mail and The Moshoeshoe graves, the Mother and Child monument, the Old Fingo Village and Tontonyane, Warren's Fort and Well and the World Centre for Science and Environment of the Scout Movement



Leopard Park Golf Club

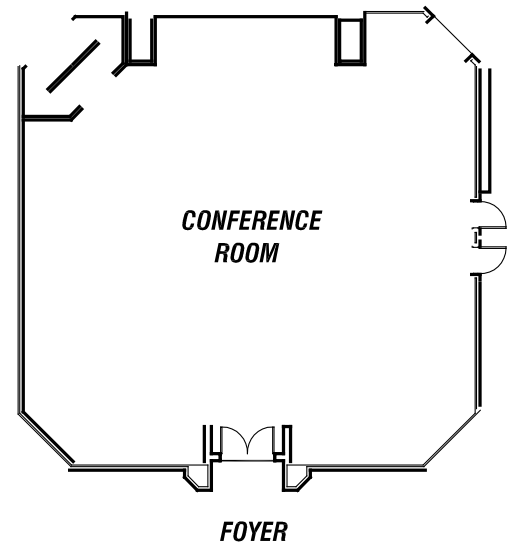


The Leopard Park Golf Club, situated next to Mmabatho Palms, is an 18-hole championship course with a superb Victorian-style clubhouse featuring a bar, lounge, dining area and games room. Bookings: 018 386 3086

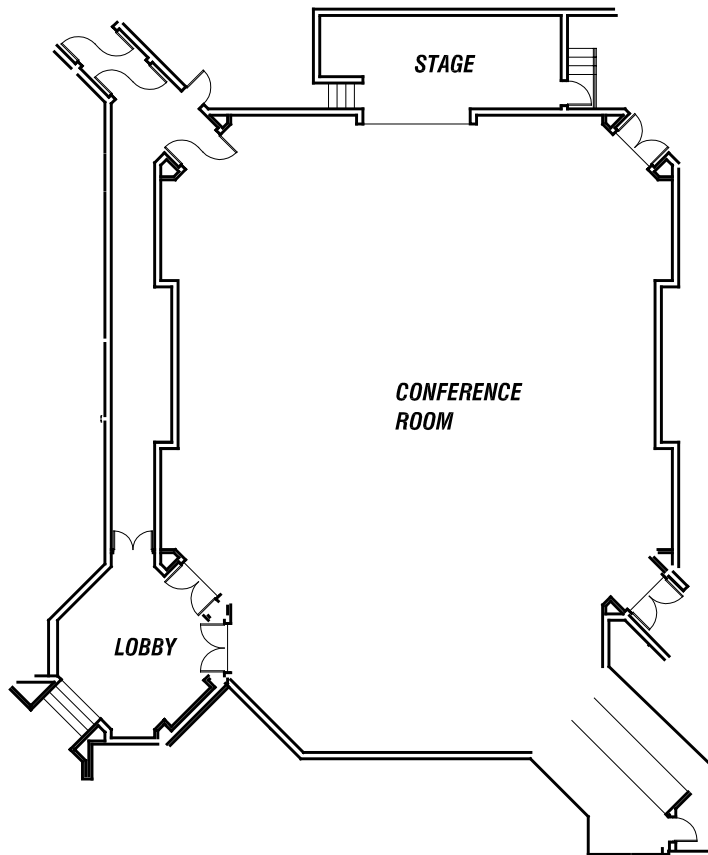
Seating And Capacity Information

	Cocktail	Cinema	Banquet	School Room	U-Shape	Boardroom
Grand Leopard Room	300	260	250	200	80	160
Leopard Room	200	180	120	150	50	80
Mebala Room	60	70	50	50	30	40
Mokala Room	60	60	40	40	30	30
Bogosing Room	100	160	80	70	40	60

The above seating styles are applicable for wall to wall seating only. They do not include technical equipment or staging.

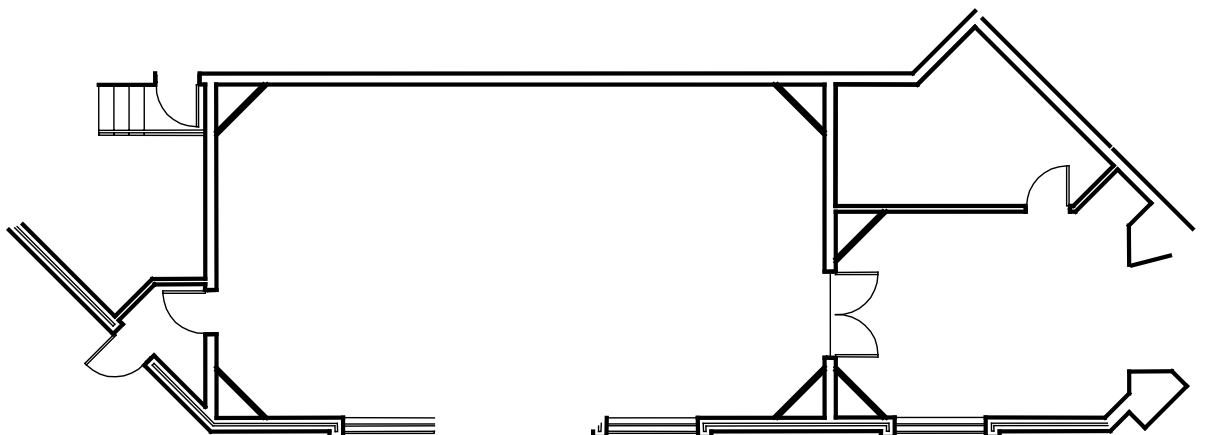


The Bogosing Room Layout



The Grand Leopard Room Layout

The Mokala Room Layout

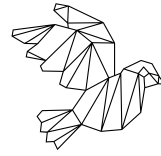


Botsolano Game Reserve



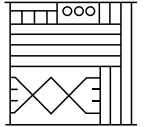
Situated on the Botswana border and on the edge of the Kalahari, some 36km from Mafikeng, it has gained a reputation as a fertile breeding ground for the white rhino.

Cooke's Lake And Ponds



For the less adventurous, this is a popular bird life sanctuary located on the outskirts of town.

The Lotlamoreng Game Reserve



The complex offers a demarcated waterfowl sanctuary, a designated recreational area and a cultural village site.

Location

Mmabatho Palms Hotel Casino Convention Resort is conveniently situated in the town of Mafikeng, North West Province in South Africa. (Malaria free area)

Airport

The Mafikeng International Airport handles daily flights to and from Johannesburg (Airlink). Complimentary shuttle service to and from the Airport.

Directions

GPS co-ordinates: S: 25° 49' 02.32" E: 25° 38' 03.85"

From Johannesburg

N1 to Roodepoort. At 14th Avenue turn off, take M47 (next off-ramp after Beyers Naude off-ramp). At traffic lights, turn right - and second set of traffic lights (Hillfox sign), turn right on to N14 to Tarlton/Ventersdorp. At traffic light, intersections for Krugersdorp Tarlton (Sasol Garage on left corner) continue straight on the N14 to Tarlton/Ventersdorp. T-Junction, turn right. Oak tree Nursery/Zennex Garage on left follow the N14 to Ventersdorp/Rustenburg. Turn left to Ventersdorp and Rustenburg at N14 sign. At next 4-way stop (oil refinery in front and a shopping complex on left corner) turn right onto the R24 Rustenburg. Carry on straight on the R24 until you reach Magaliesburg. Pass through the little town of Magaliesburg over the railway line and up the hill to the split in the road. Keep left and follow the sign marked R709 Koster. Carry on straight on the R709 which will take you through Derby, a little town before Koster. Carry on straight through Koster on main road which will take you onto the R52 to Lichtenburg. Enter Lichtenburg at the 4-way stop (Engen Garage on left), continue straight over and follow the road into town. At the traffic lights at the T-junction turn right. Continue straight till you reach Swart Street and turn left into Swart Street (sign on corner indicating left to Mafikeng). Continue straight until 4-way stop with BP Garage on the right hand corner. Carry on straight over the stop onto the R503 to Mafikeng. Arrive in Mafikeng - over the bridge to the 4-way stop. You are now on Nelson Mandela Drive. Continue straight on Nelson Mandela Drive through all the 4-way stops and traffic lights. Once you have passed the Crossing Shopping Centre (Sasol Garage on the left corner), keep to the right hand lane. At the last set of traffic lights (Shell Garage on left corner) turn right. You have arrived at Mmabatho Palms Hotel Casino Convention Resort.

Mafikeng Game Reserve

A 4600 ha paradise which nestles alongside the upmarket suburb of Riviera Park. Boasting a number of diverse habitats, this reserve has excellent varieties of plains game and bird viewing opportunities



Modimola Dam

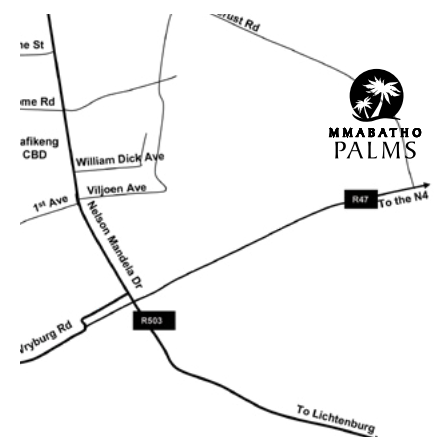
A popular angling spot which hosts an annual angling competition.



Regional Map



Local Map



**MMABATHO
PALMS**

HOTEL CASINO CONVENTION RESORT

ADDRESS

Nelson Mandela Drive, Mafikeng,
North West, South Africa
Private Bag X122,
Mmabatho, 2735
T +27 (0)18 389 1000/1111
info@mmabathopalms.co.za
www.mmabathopalms.co.za

PEERMONT GROUP SALES

T +27 (0)11 928 1903
sales@peermont.com

PEERMONT CENTRAL RESERVATIONS

T 0860 777 900 (SA only)
+27 (0)11 928 1928
reservations@peermont.com

FOLLOW US